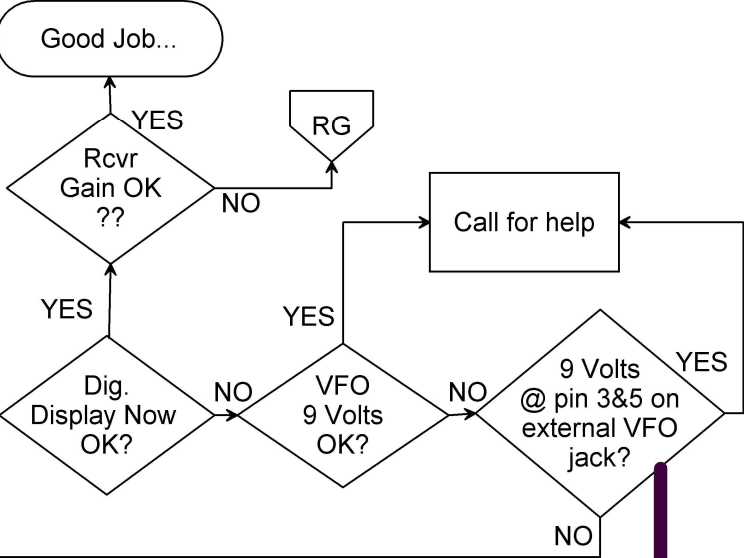


1. METER & DIAL PILOT LAMPS OK?
2. VFO LED LAMP IS OFF?
3. LOW AUDIO HISSSS, BUT NO SIGNAL?
4. DISPLAY DOES NOT SHOW FREQ?
5. FAN OK?

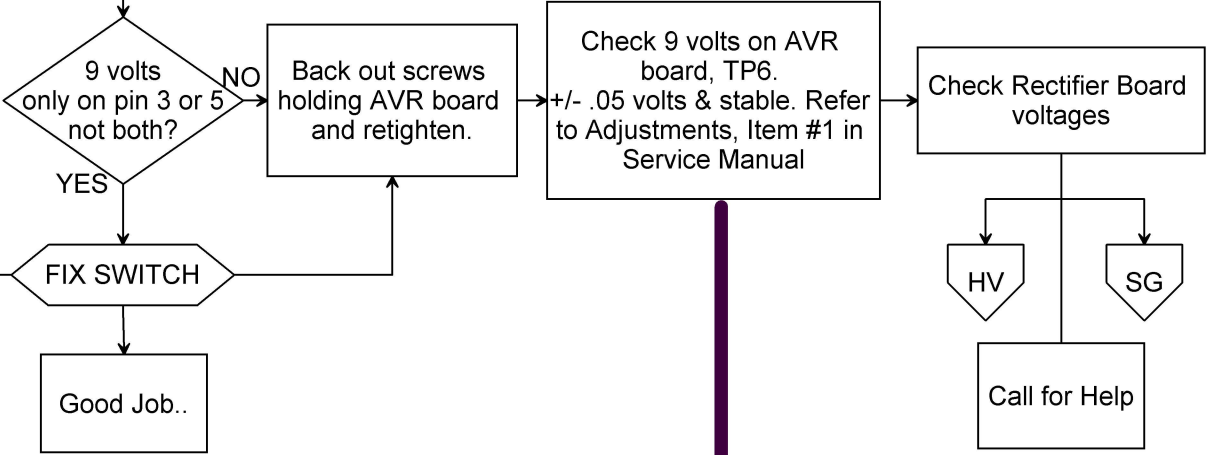
TS530 & TS830
Partially Dead

CAUTION !!! HIGH VOLTAGE...

Mandatory Reading:
TS-830 Survival Guide, edited by DL9AI
www.wb4hfn.com/kenwood/articles



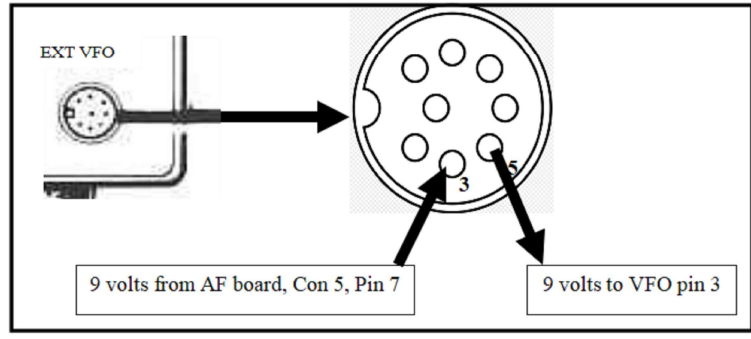
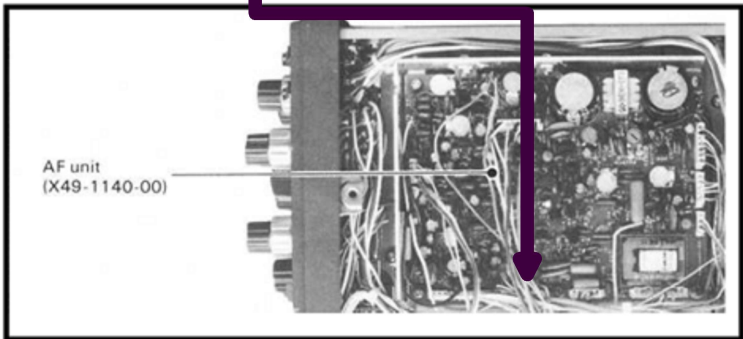
1. Spray DeOxit cleaner in remote VFO jack on rear panel.
2. Insert a DIN plug in both jacks.
3. Keep reinserting until display comes back.
4. You might need to clean switch mounted to jack.
5. Blow out excess.



Meter Lamps ON?
VFO LED Lamp OFF?
Digital Display OFF?



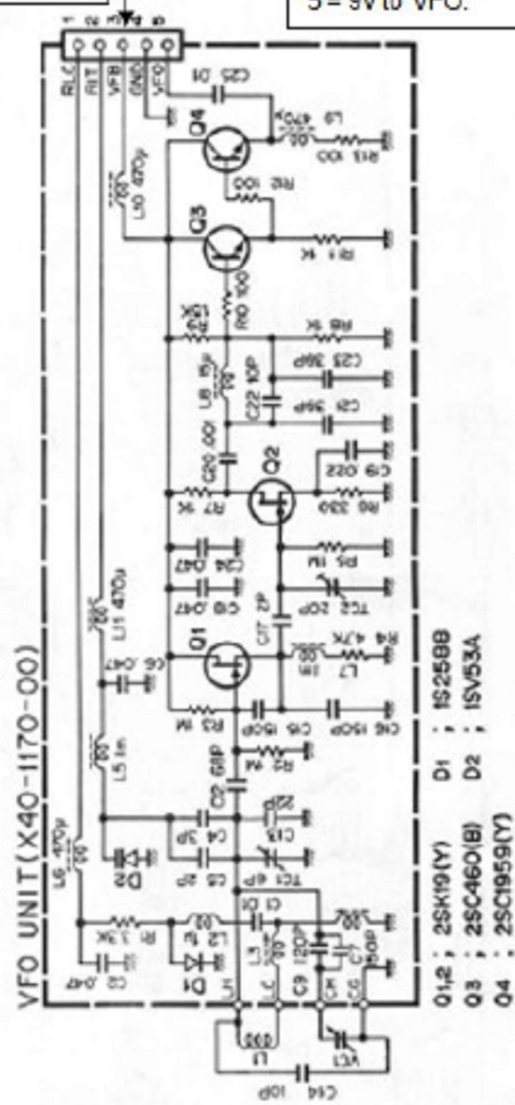
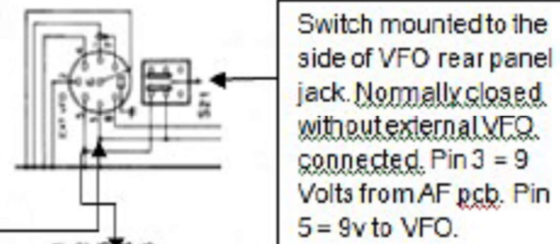
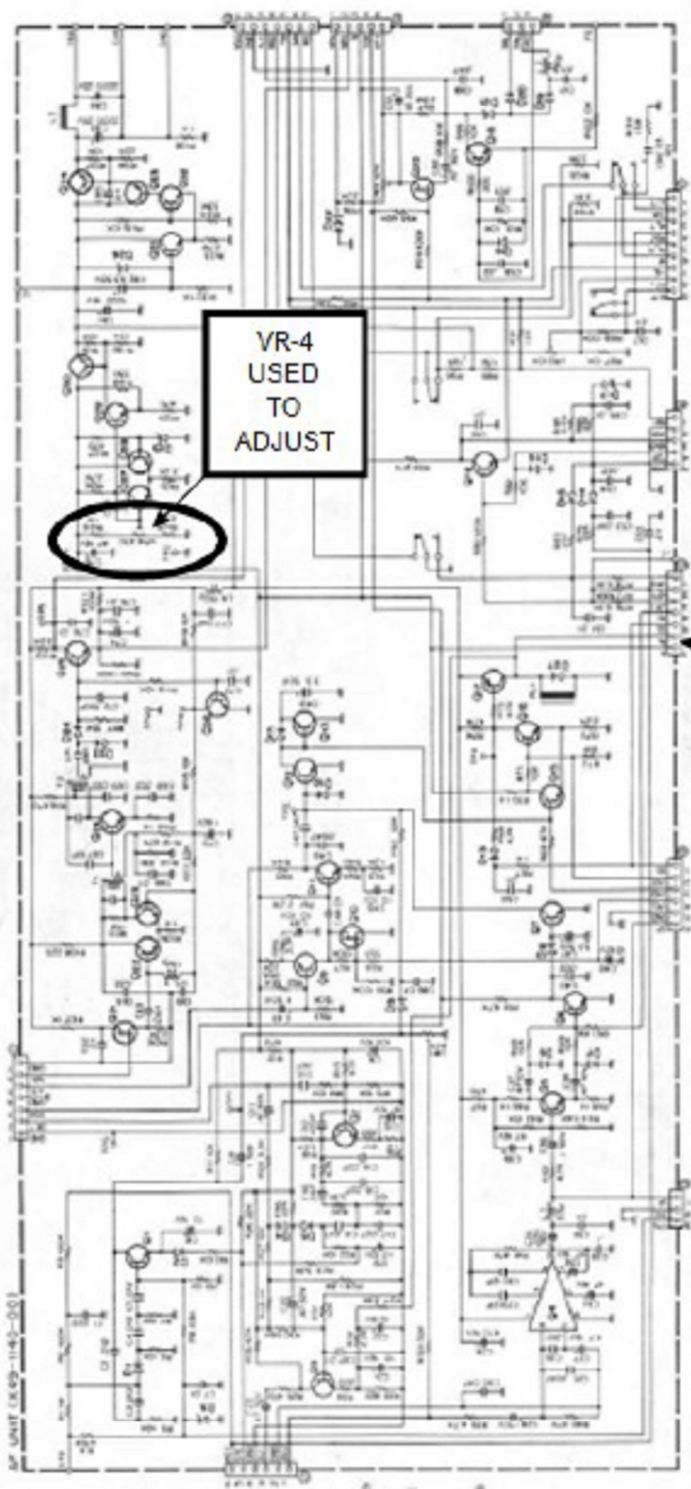
If VFO LED lamp is on check function switch. It could be dirty or stuck in-between positions.



TS-830S SCHEMATIC DIAGRAM

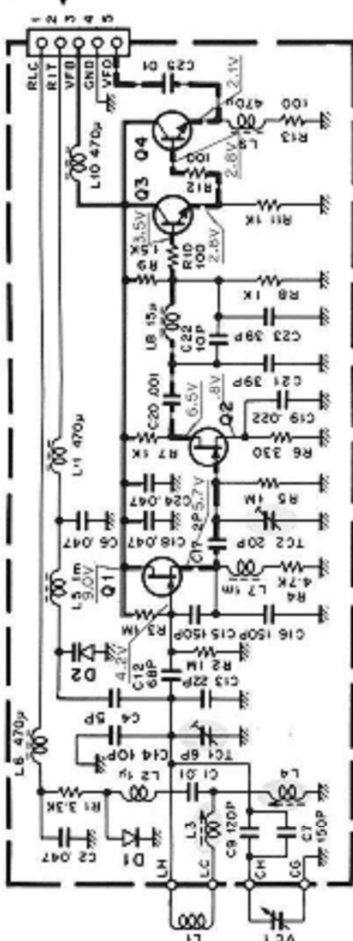
AF UNIT (X49-1140-00)

VFO UNIT (X40-1170-00)



CIRCUIT DIAGRAMS TS-530S

Switch mounted to the side of VFO rear panel jack. Normally closed without external VFO connected. Pin 3 = 9 Volts from AF pcb. Pin 5 = 9v to VFO.

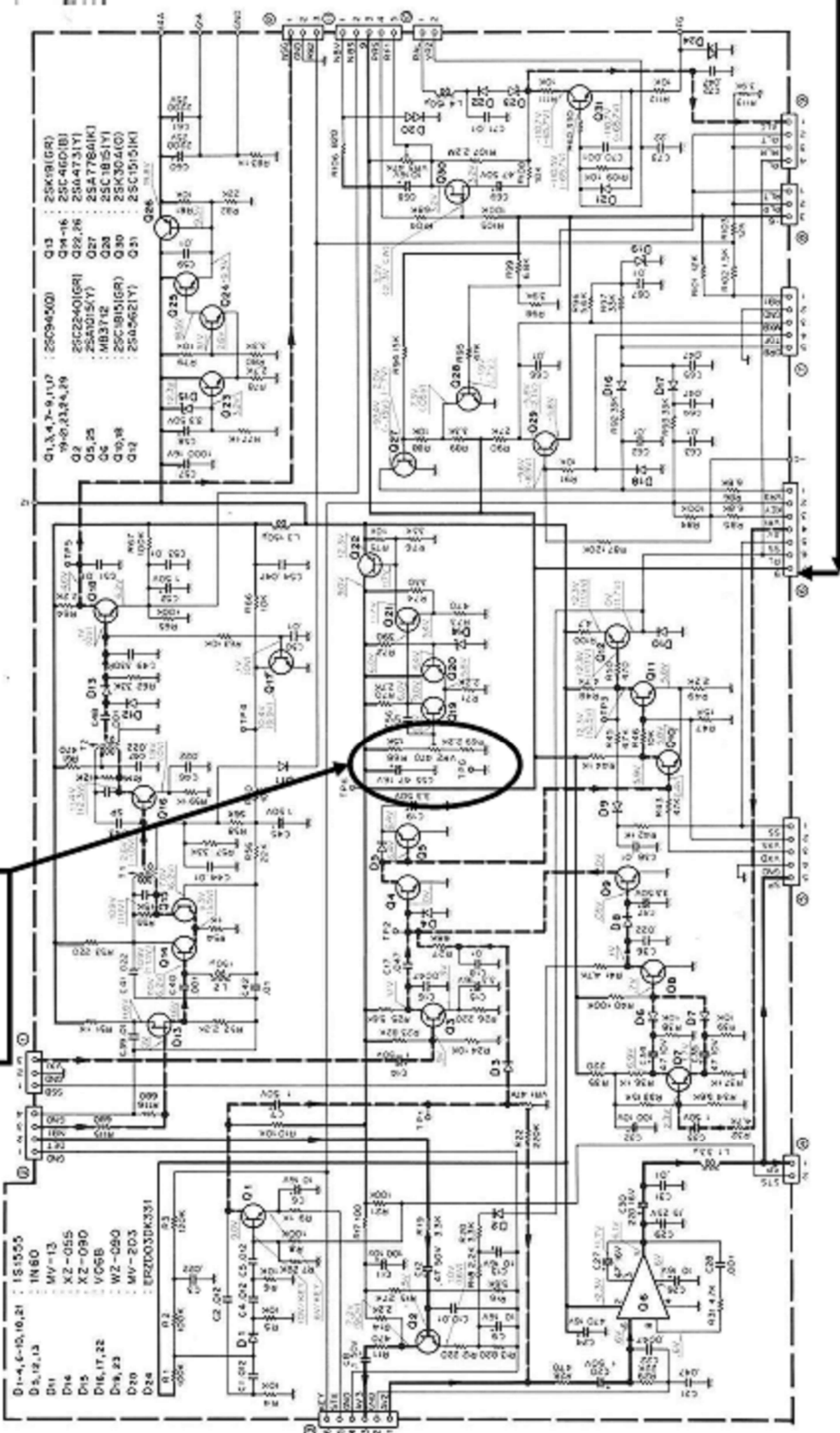


VFO UNIT (X40-1170-00) ▲

- Q1, 2 : 25K19(Y)
- Q3 : 25C460(B)
- Q4 : 25C1959(Y)
- D1 : 1S2588
- D2 : 1SV53A

VR2
USED
TO
ADJUST
9 V

▼ AF UNIT (X49-1150-00)



- Q1, 4, 7-9, 11, 17 : 25C94(XD)
- Q2 : 9-0-1324-19
- Q3 : 25K19(GR)
- Q4 : 25C460(B)
- Q5 : 25A2015(Y)
- Q6 : MB3712
- Q7 : 25A778A(K)
- Q8 : 25C1851(Y)
- Q9 : 25C1951(GR)
- Q10 : 25K304(O)
- Q11 : 25C1515(K)
- Q12 : 25C1515(K)
- Q13 : 25C1515(K)
- Q14 : 25C1515(K)
- Q15 : 25C1515(K)
- Q16 : 25C1515(K)
- Q17 : 25C1515(K)
- Q18 : 25C1515(K)
- Q19 : 25C1515(K)
- Q20 : 25C1515(K)
- Q21 : 25C1515(K)
- Q22 : 25C1515(K)
- Q23 : 25C1515(K)
- Q24 : 25C1515(K)
- Q25 : 25C1515(K)
- Q26 : 25C1515(K)
- Q27 : 25C1515(K)
- Q28 : 25C1515(K)
- Q29 : 25C1515(K)
- Q30 : 25C1515(K)
- Q31 : 25C1515(K)
- Q32 : 25C1515(K)
- Q33 : 25C1515(K)
- Q34 : 25C1515(K)
- Q35 : 25C1515(K)
- Q36 : 25C1515(K)
- Q37 : 25C1515(K)
- Q38 : 25C1515(K)
- Q39 : 25C1515(K)
- Q40 : 25C1515(K)
- Q41 : 25C1515(K)
- Q42 : 25C1515(K)
- Q43 : 25C1515(K)
- Q44 : 25C1515(K)
- Q45 : 25C1515(K)
- Q46 : 25C1515(K)
- Q47 : 25C1515(K)
- Q48 : 25C1515(K)
- Q49 : 25C1515(K)
- Q50 : 25C1515(K)
- Q51 : 25C1515(K)
- Q52 : 25C1515(K)
- Q53 : 25C1515(K)
- Q54 : 25C1515(K)
- Q55 : 25C1515(K)
- Q56 : 25C1515(K)
- Q57 : 25C1515(K)
- Q58 : 25C1515(K)
- Q59 : 25C1515(K)
- Q60 : 25C1515(K)
- Q61 : 25C1515(K)
- Q62 : 25C1515(K)
- Q63 : 25C1515(K)
- Q64 : 25C1515(K)
- Q65 : 25C1515(K)
- Q66 : 25C1515(K)
- Q67 : 25C1515(K)
- Q68 : 25C1515(K)
- Q69 : 25C1515(K)
- Q70 : 25C1515(K)
- Q71 : 25C1515(K)
- Q72 : 25C1515(K)
- Q73 : 25C1515(K)
- Q74 : 25C1515(K)
- Q75 : 25C1515(K)
- Q76 : 25C1515(K)
- Q77 : 25C1515(K)
- Q78 : 25C1515(K)
- Q79 : 25C1515(K)
- Q80 : 25C1515(K)
- Q81 : 25C1515(K)
- Q82 : 25C1515(K)
- Q83 : 25C1515(K)
- Q84 : 25C1515(K)
- Q85 : 25C1515(K)
- Q86 : 25C1515(K)
- Q87 : 25C1515(K)
- Q88 : 25C1515(K)
- Q89 : 25C1515(K)
- Q90 : 25C1515(K)
- Q91 : 25C1515(K)
- Q92 : 25C1515(K)
- Q93 : 25C1515(K)
- Q94 : 25C1515(K)
- Q95 : 25C1515(K)
- Q96 : 25C1515(K)
- Q97 : 25C1515(K)
- Q98 : 25C1515(K)
- Q99 : 25C1515(K)
- Q100 : 25C1515(K)